

INNOVET *VERSA/TOSHIBA DR*

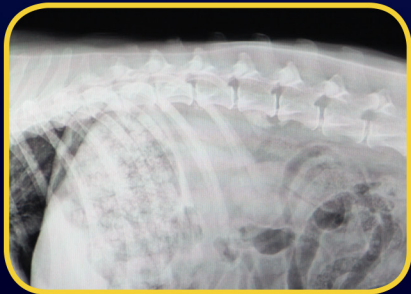
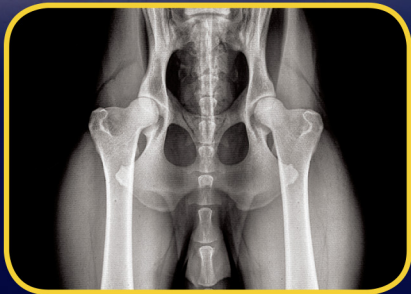


Customizable to your precise needs

4 way Float Top Table

Upgrade for additional power

Hands free toe-tap trigger system



Backed by **InnoVet's** outstanding track record of dependability and paired with MinXray's expert guidance and service, the **InnoVet® Versa/Toshiba DR Veterinary Radiology System** is the perfect solution to military veterinary care.

- Anatomical Programming
- 17 x 17 in (43 x 43 cm) Flat Panel CsI DR Detector
- Desktop computer and paired 23 in (58 cm) flat screen monitors
- Easy to operate software package — DICOM 3.0 compatible with positioning tutorials
- DICOM Patient CD burning capability

MINXRAY[®] INC.

Where you care, we're there.

INNOVET VERSA/TOSHIBA DR

VETERINARY RADIOLOGY SYSTEM

X-RAY OUTPUT

- High Frequency 30-40 kW X-Ray Generator
- Variable mA up to 300 mA
- kV range from 40-125 kVp, 1kV steps

TABLE

- 4 way 67 x 29 in (170 x 73 cm) float top
- Grid as specified

ACTIVATION

- Foot pedal activation
- Ability to add hand trigger

DIGITAL ACQUISITION SYSTEM PANEL

PANEL

17 x 17 in (43 x 43 cm) Csl DR acquisition plate;
flat panel

COMPUTER STATION/SOFTWARE

- High Capacity Computer with no less than 1 TB storage, capable of copying files to CD/DVD
- Upgradeable to support one additional viewing station
- Acquisition software including zoom, PAN, magnifier, ROI, crop, rotate, mirror, insertion of image annotations, measurements
- Acquired DICOM images exportable and savable as JPEG, TIF, or BMP

VIEWING STATION WITH DOUBLE MONITOR

PANELS

- Paired with 21-24 in (53-61 cm) full HD flat panel LCD or LED monitors with 1920 x 1080 minimum resolution
- Can be oriented vertically or horizontally

RESOLUTION

- 24 bit color or 8 bit grayscale monitor minimum
- 1000:1 or great contrast ratio
- 250 cd/m2 luminescence



Ordering Information

Contract No. W81K04-14-D-0011

Center for Health Care Contracting
FT Sam Houston, TX

**For more information about MinXray products,
contact MinXray at:**

MinXray, Inc.
3611 Commercial Avenue
Northbrook, Illinois 60062 USA
1-847-564-0323

Toll Free: 1-800-221-2245 (U.S. & CA.)
E-mail: info@minxray.com
Web: www.minxray.com

MINXRAY[®]
INC

Where you care, we're there.