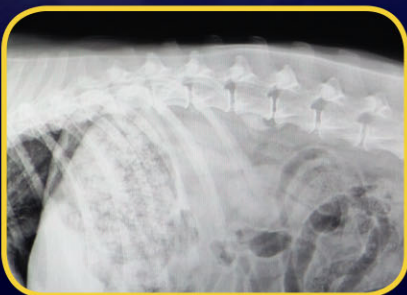


SA100AP



Compact and easy to use — the **SA100AP Radiography System**. With anatomical programming for accurate pre-programmed exposure techniques, the x-ray process has never been more simple or efficient. The **SA100AP** provides the following features:

- **HF100AP** x-ray unit with anatomical programming
- **XRT100+** compact x-ray table
(Requiring just 10 square feet of floorspace)
- No special electrical requirements
- Full compatibility with digital imaging systems
- Superior radiographic output
- Backed by a 5-year limited warranty

MINXRAY[®]
INC.

Where you care, we're there.

SA100AP

HF100AP X-RAY UNIT WITH ANATOMICAL TECHNIQUE PROGRAMMING

ELECTRONIC DESIGN	Computer-controlled, high frequency, full-wave rectified
X-RAY OUTPUT	30-60 kVDC @ 40 mA (0.3-4.0 mAs), 32 mA (4.3-64.8 mAs) 62-70 kVDC @ 35 mA (0.3-3.5 mAs), 28 mA (3.8-56.7 mAs) 72-80 kVDC @ 30 mA (0.3-3.0 mAs), 24 mA (3.2-48.6 mAs) 82-100 kVDC @ 25mA (0.3-2.5 mAs), 20 mA (2.7-40.5 mAs)

AC INPUT 120 or 230 V; 50/60 Hz

LINE VOLTAGE ADJUSTMENT Automatic, dynamic

TIMER 0.01-2.0 sec

INTERNAL POWER SUPPLY 60 kHz

X-RAY TUBE Toshiba D-124S

FOCAL SPOT 1.2 mm

ANODE HEAT STORAGE 20 kHU

TOTAL FILTRATION 2.7 mm Al equivalent

COLLIMATOR Continuously adjustable light beam type

DR INTERFACE RJ45 connector

EXPOSURE SWITCH FS-HF footswitch

POWER CORD 20 ft

SIZE 11.42 x 15.75 x 9.06 in
(290 x 400 x 230 mm)

WEIGHT 35.71 lb (16.19 kg)

XRT100+ COMPACT X-RAY TABLE DR INTERFACE

TOP DIMENSIONS 23 x 54 in (58.4 x 137.2 cm)

TABLE HEIGHT 32 in (81.3 cm)

FOCAL FILM DISTANCE 34 in (86 cm)

WEIGHT 140 lb (64 kg)

XRT90 COMPACT X-RAY TABLE

TOP DIMENSION 23 x 40 in (59 x 101 cm)

TABLE HEIGHT 30 in (76.2 cm)

WEIGHT 110 lb (50 kg)



Ordering Information

The SA100AP Radiography System system includes

- 1 ea. **HF100AP** x-ray unit power cord and FS-HF footswitch
- 1 ea. **XRT100+** compact x-ray table with integrated tubestand/cassette tray with longitudinal travel with 6:1, 103 lpi grid
or
XRT90 compact x-ray table with 6:1, 103 lpi grid

Optional 12 in table side extensions available

Shipping Weight of 215 lb (97 kg)

For more information about MinXray products, contact your local dealer or MinXray at:

MinXray, Inc.
3611 Commercial Avenue
Northbrook, Illinois 60062 USA
1-847-564-0323

Toll Free: 1-800-221-2245 (U.S. & CA)
E-mail: info@minxray.com
Web: www.minxray.com

MINXRAY[®] INC

Where you care, we're there.