

# Wireless Handheld Ultrasound



## How Does It Work?

We condensed the features of a large cart into a small circuit board. The results are small and lightweight with amazing images on your smartphone or tablet and wifi built right in. We also eliminated the need for an external router, internet connection or a cable. It saves time, is easier and more efficient, and gives crisp visual images during any clinical procedure.

## An Imaging Tool

Imagine every doctor with a handheld ultrasound in their pocket ready anytime to check any patient from head to toe. Now MinXray is making this vision of the future a reality today. Why rely only on a stethoscope when you can take a look inside and see?

- Waterproof
- Reduces cross-contamination
- Easy to clean

## CONTACT US

[minxray.com](http://minxray.com)

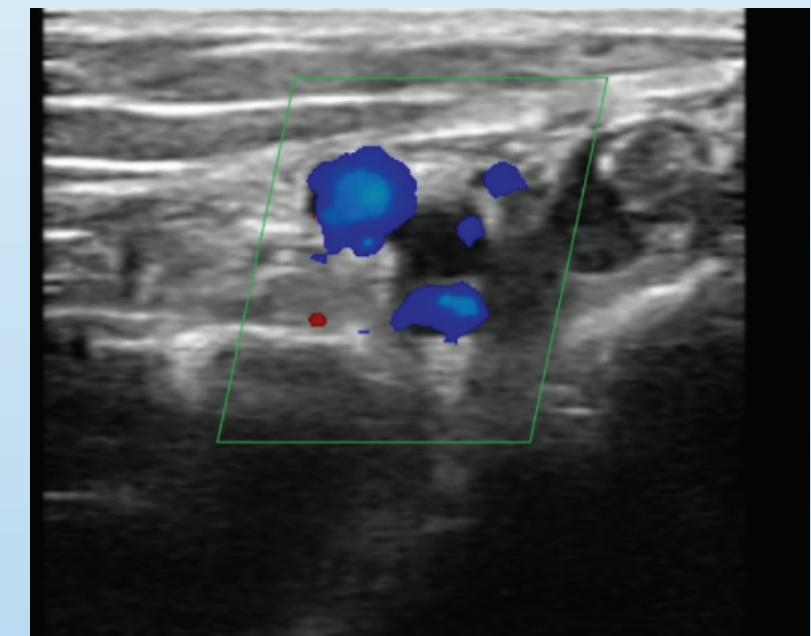
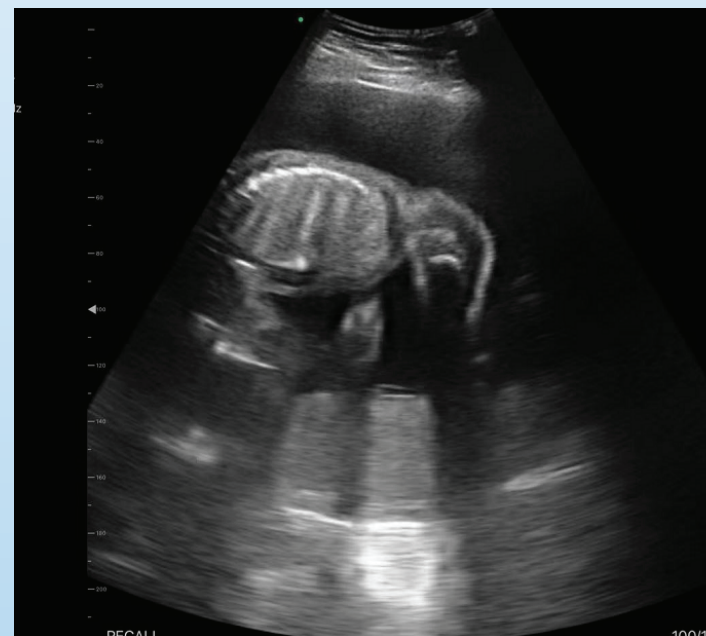
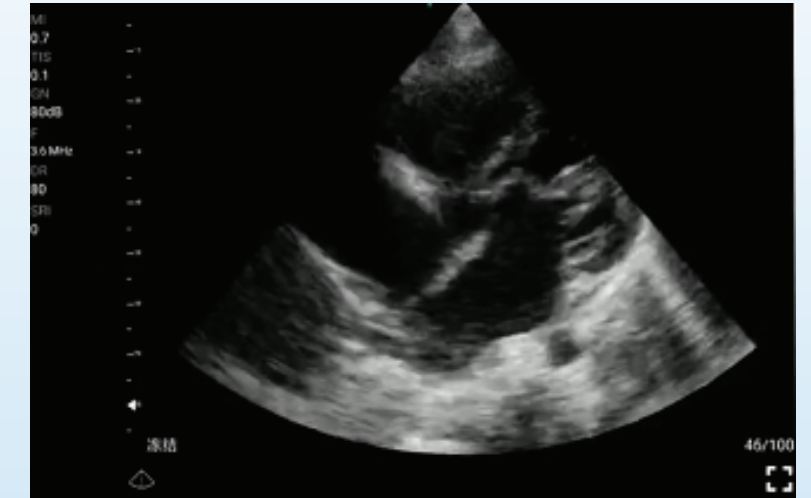
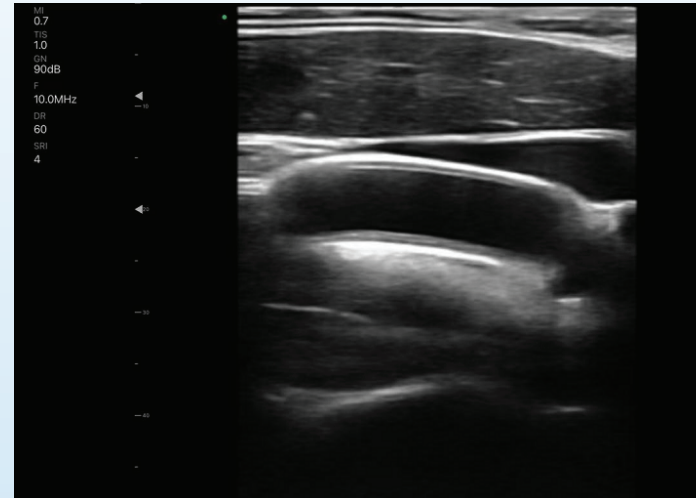
800-221-2245 (USA & Canada)

847-564-0323

[info@minxray.com](mailto:info@minxray.com)

## Easy to Use on iOS and Android

Whether you're a first-timer or an ultrasound expert, turn on the power button and launch the app. Choose an exam type from the list of AI-powered presets, and start scanning. Just like using a camera, make easy adjustments to add more clearly if needed. Live training is available.



# Wireless Handheld Ultrasound

SX-5C

Double-headed Color Probe



## Applications:

- Small parts
- MSK
- Nerve
- Vascular access
- Abdomen
- Lung

## Application Settings:

- Emergency Inspection: ER, ambulance, ICU, wild first aid, battlefield rescue
- Preliminary Examination: ward inspection, primary clinic examination, medical examination, health screening, home care, family planning, etc.
- Visualization Tools: vascular access, surgical and therapy guidance
- Remote Diagnosis, Consultation, Training: Works on smartphone or tablet, easy to use

## CONTACT US

[minxray.com](http://minxray.com)

800-221-2245 (USA & Canada)

847-564-0323

[info@minxray.com](mailto:info@minxray.com)

## Technical Specifications

**Description:** Double-headed Color Probe (Micro-convex/Linear)

**Scanning Model:** Electronic Array R20/L40

**Display Model:** B, B/M, Color, PW, PDI

**Elements:** 128, Channels: 32

**Dimensions:** 156mm x 60mm x 20mm

**Weight:** 260g

**Frequency:** 5.0/7.0MHz Convex/Phased Array, 7.5/10MHz Linear

**Depth/Width/Angle:** Convex 40-160mm, 50 Degree. Linear 20-100mm

**Measure:** Length, Area/Circumference, Trace, Angle, Obstetrics, Blood Flow Velocity, Heart Rate, S/D Ratio (Resistive Index), Gestational Age

**Image Frame Rate:** 20f/s

**Battery:** 3.5 continuous hours; Charge: 2 hours

**Wifi:** 802.11n/2.4G/5G/450Mbps

**Operating System:** iOS/Android/Windows

**Charging Model:** Wireless charging in 2 hours

**Models:** iPhone, Samsung (S7 or I7 and above), iPad (Generation 7 or newer)

18-month Warranty



# Wireless Handheld Ultrasound

SX-1CTS

Triple-headed Color Probe



## Applications:

- Small parts
- MSK
- Nerve
- Vascular access
- Abdomen
- Lung
- Cardiac

## Application Settings:

- Emergency Inspection: ER, ambulance, ICU, wild first aid, battlefield rescue
- Preliminary Examination: ward inspection, primary clinic examination, medical examination, health screening, home care, family planning, etc.
- Visualization Tools: vascular access, surgical and therapy guidance
- Remote Diagnosis, Consultation, Training: Works on smartphone or tablet, easy to use

## CONTACT US

[minxray.com](http://minxray.com)

800-221-2245 (USA & Canada)

847-564-0323

[info@minxray.com](mailto:info@minxray.com)

## Technical Specifications

**Description:** Triple-headed Color Probe (Convex/Linear Convex with Mode of Phased Array Scan)

**Scanning Model:** Electronic Array R60/L40

**Display Model:** B, B/M, Color, PW, PDI

**Elements:** 128, **Channels:** 32

**Dimensions:** 156mm x 60mm x 20mm

**Weight:** 260g

**Frequency:** 3.5/5.0MHz Convex/Phased Array, 7.5/10MHz Linear  
**Depth/Width/Angle:** Convex 90/160/220/305mm, 50 Degree. Linear 20/40/60/100mm, Phased Array: 80 Degree. Linear 40 Degree

**Measure:** Length, Area/Circumference, Trace, Angle, Obstetrics, Blood Flow Velocity, Heart Rate, S/D Ratio (Resistive Index), Gestational Age

**Image Frame Rate:** 20f/s

**Battery:** 3.5 continuous hours; **Charge:** 2 hours

**Wifi:** 802.11n/2.4G/5G/450Mbps

**Operating System:** iOS/Android/Windows

**Charging Model:** Wireless charging in 2 hours

**Models:** iPhone, Samsung (S7 or I7 and above), iPad (Generation 7 or newer)  
18-month Warranty



# Wireless Handheld Ultrasound

SX-7C

Double-headed Color Probe



## Applications:

- Small parts
- MSK
- Nerve
- Vascular access
- Abdomen
- Lung

## Application Settings:

- Emergency Inspection: ER, ambulance, ICU, wild first aid, battlefield rescue
- Preliminary Examination: ward inspection, primary clinic examination, medical examination, health screening, home care, family planning, etc.
- Visualization Tools: vascular access, surgical and therapy guidance
- Remote Diagnosis, Consultation, Training: Works on smartphone or tablet, easy to use

## CONTACT US

[minxray.com](http://minxray.com)

800-221-2245 (USA & Canada)

847-564-0323

[info@minxray.com](mailto:info@minxray.com)

## Technical Specifications

**Description:** Double-headed Color Probe (Round Curvilinear/Linear)

**Scanning Model:** Electronic Array R10/L40

**Display Model:** B, B/M, Color, PW, PDI

**Elements:** 128, **Channels:** 32

**Dimensions:** 156mm x 60mm x 20mm

**Weight:** 260g

**Frequency:** 6.0/8.0MHz Minicurvilinear, 7.5/10MHz Linear

**Depth/Width/Angle:** Minicurvilinear 30-120mm, 50 Degree. Linear 20-80mm

**Measure:** Length, Area/Circumference, Trace, Angle, Obstetrics, Blood Flow Velocity, Heart Rate, S/D Ratio (Resistive Index), Gestational Age

**Image Frame Rate:** 20f/s

**Battery:** 3.5 continuous hours; **Charge:** 2 hours

**Wifi:** 802.11n/2.4G/5G/450Mbps

**Operating System:** iOS/Android/Windows

**Charging Model:** Wireless charging in 2 hours

**Models:** iPhone, Samsung (S7 or I7 and above), iPad (Generation 7 or newer)

18-month Warranty



# Wireless Handheld Ultrasound

EU-1C

Ophthalmic Scanner



## Applications:

- Small parts
- Vascular access
- Ophthalmic

## CONTACT US

[minxray.com](http://minxray.com)

800-221-2245 (USA & Canada)

847-564-0323

[info@minxray.com](mailto:info@minxray.com)

## Technical Specifications

**Description:** Ophthalmic Scanner

**Display Model:** B, B/M, Color, PW, PDI

**Elements:** 128, **Channels:** 64

**Weight:** 150g

**Frequency:** 8.0/11.0MHz

**Depth:** 20-80mm

**Image Optimization:** Gain, Depth, Focal Zone(s), Dynamic Range, Frequency, Speckle Filter, Time Gain Compensation

**Measure:** Length, Area/Circumference, Trace, Angle, Obstetrics, Blood Flow Velocity, Heart Rate, S/D Ratio (Resistive Index), Gestational Age

**Puncture:** On-screen in-plane and out-of-plane guides

**Image Frame Rate:** 20f/s

**Cine-loop:** 100-1000 Frames

**Battery:** 1.5 continuous scan; Wireless Charging: 1 hour

**Wifi:** 802.11n/2.4G/5G/450Mbps

**Operating System:** iOS/Android

**Models:** iPhone, Samsung (S7 or I7 and above), iPad (Generation 7 or newer)  
18-month Warranty



# Wireless Handheld Ultrasound

UX-8P

Double-headed Color Probe



## Applications:

- Small parts
- Vascular access
- Ophthalmic

## Application Settings:

- Emergency Inspection: ER, ambulance, ICU, wild first aid, battlefield rescue
- Preliminary Examination: ward inspection, primary clinic examination, medical examination, health screening, home care, family planning, etc.
- Visualization Tools: vascular access, surgical and therapy guidance
- Remote Diagnosis, Consultation, Training: Works on smartphone or tablet, easy to use

## CONTACT US

[minxray.com](http://minxray.com)

800-221-2245 (USA & Canada)

847-564-0323

[info@minxray.com](mailto:info@minxray.com)

## Technical Specifications

**Description:** Double-headed Color Probe (Linear and Phased Array Scan)

**Display Model:** B, B/M, Color, PW, PDI

**Elements:** 128, Channels: 64

**Footprint:** Phased Array: 25\*17mm, Linear 30mm

**Weight:** 150g

**Frequency:** 7.5/10.0MHz, Phased Array: 2.2-3.6MHz

**Depth:** Linear 20-100mm, Phased Array: 90-240mm

**Image Optimization:** Gain, Depth, Focal Zone(s), Dynamic Range, Frequency, Speckle Filter, Time Gain Compensation

**Measure:** Length, Area/Circumference, Trace, Angle, Obstetrics, Blood Flow Velocity, Heart Rate, S/D Ratio (Resistive Index), Gestational Age

**Puncture:** On-screen in-plane and out-of-plane guides

**Image Frame Rate:** 20f/s

**Cine-loop:** 100-1000 Frames

**Battery:** 1.5 continuous scan; Wireless Charging: 1 hour

**Wifi:** 802.11n/2.4G/5G/450Mbps

**Operating System:** iOS/Android

**Models:** iPhone, Samsung (S7 or I7 and above), iPad (Generation 7 or newer)  
18-month Warranty



# Wireless Handheld Ultrasound

EL5CE

Biplane Endocavity Probe



## Applications:

- Urology
- OB/Gyn

## Application Settings:

- Emergency Inspection: ER, ambulance, ICU, wild first aid, battlefield rescue
- Preliminary Examination: ward inspection, primary clinic examination, medical examination, health screening, home care, family planning, etc.
- Visualization Tools: vascular access, surgical and therapy guidance
- Remote Diagnosis, Consultation, Training: Works on smartphone or tablet, easy to use

## CONTACT US

[minxray.com](http://minxray.com)

800-221-2245 (USA & Canada)

847-564-0323

[info@minxray.com](mailto:info@minxray.com)

## Technical Specifications

**Description:** Double-headed Endocavity (Transvaginal)/ Curvilinear Color Probe

**Scanning Model:** Electronic Array R10/L40

**Display Model:** B, B/M, Color, PW, PDI

**Elements:** 128, **Channels:** 32

**Weight:** 260g

**Frequency:** 3.5/5.0MHz Curvilinear and 6.0/8.0MHz Linear  
**Depth/Width/Angle:** Linear 20/40/60/100mm, Convex: 90-300mm

**Measure:** Length, Area/Circumference, Trace, Angle, Obstetrics, Blood Flow Velocity, Heart Rate, S/D Ratio (Resistive Index), Gestational Age

**Image Frame Rate:** 20f/s

**Battery:** 3.5 continuous hours; **Charge:** 2 hours

**Wifi:** 802.11n/2.4G/5G/450Mbps

**Operating System:** iOS/Android/Windows

**Charging Model:** Wireless charging in 2 hours

**Models:** iPhone, Samsung (S7 or I7 and above), iPad (Generation 7 or newer)  
18-month Warranty



# Wireless Handheld Ultrasound

US-2T

Biplane Endocavity Probe



## Applications:

- Urology
- OB/Gyn

## Application Settings:

- Emergency Inspection: ER, ambulance, ICU, wild first aid, battlefield rescue
- Preliminary Examination: ward inspection, primary clinic examination, medical examination, health screening, home care, family planning, etc.
- Visualization Tools: vascular access, surgical and therapy guidance
- Remote Diagnosis, Consultation, Training: Works on smartphone or tablet, easy to use

## CONTACT US

[minxray.com](http://minxray.com)

800-221-2245 (USA & Canada)

847-564-0323

[info@minxray.com](mailto:info@minxray.com)

## Technical Specifications

**Description:** Endocavity/Transvaginal Color Probe

**Scanning Model:** Electronic Array R10

**Display Model:** B, B/M, Color, PW, PDI

**Elements:** 128, **Channels:** 32

**Weight:** 150g

**Frequency:** 6.0/8.0MHz Linear

**Depth/Width/Angle:** Linear 30/60/90/120mm

**Measure:** Length, Area/Circumference, Trace, Angle, Obstetrics, Blood Flow Velocity, Heart Rate, S/D Ratio (Resistive Index), Gestational Age

**Image Frame Rate:** 20f/s

**Battery:** 4 continuous hours; **Charge:** 2 hours

**Wifi:** 802.11n/2.4G/5G/450Mbps

**Operating System:** iOS/Android/Windows

**Charging Model:** Wireless charging in 2 hours

**Models:** iPhone, Samsung (S7 or I7 and above), iPad (Generation 7 or newer)  
18-month Warranty





# Wireless Handheld Ultrasound

UX-2D

Biplane Endocavity Probe



## Applications:

- Urology
- OB/Gyn

## Application Settings:

- Emergency Inspection: ER, ambulance, ICU, wild first aid, battlefield rescue
- Preliminary Examination: ward inspection, primary clinic examination, medical examination, health screening, home care, family planning, etc.
- Visualization Tools: vascular access, surgical and therapy guidance
- Remote Diagnosis, Consultation, Training: Works on smartphone or tablet, easy to use

## CONTACT US

[minxray.com](http://minxray.com)

800-221-2245 (USA & Canada)

847-564-0323

[info@minxray.com](mailto:info@minxray.com)

## Technical Specifications

**Description:** Bi-plane Endocavity Color Probe

**Scanning Mode:** Electronic Array R60/L40

**Display Model:** B, B/M, Color, PW, PDI

**Elements:** 128, **Channels:** 32

**Weight:** 150g

**Frequency:** 6.5/8.0MHz Linear

**Depth/Width/Angle:** Linear 20-100mm, Convex: 50-300mm

**Measure:** Length, Area/Circumference, Trace, Angle, Obstetrics, Blood Flow Velocity, Heart Rate, S/D Ratio (Resistive Index), Gestational Age

**Image Frame Rate:** 20f/s

**Battery:** 3.5 continuous hours; **Charge:** 2 hours

**Wifi:** 802.11n/2.4G/5G/450Mbps

**Operating System:** iOS/Android/Windows

**Charging Model:** Wireless charging in 2 hours

**Models:** iPhone, Samsung (S7 or I7 and above), iPad (Generation 7 or newer)  
18-month Warranty

