

Wireless Handheld Ultrasound



How Does It Work?

We condensed the features of a large cart into a small circuit board. The results are small and lightweight with amazing images on your smartphone or tablet and wifi built right in. We also eliminated the need for an external router, internet connection or a cable. It saves time, is easier and more efficient, and gives crisp visual images during any clinical procedure.

An Imaging Tool

Imagine every doctor with a handheld ultrasound in their pocket ready anytime to check any patient from head to toe. Now MinXray is making this vision of the future a reality today. Why rely only on a stethoscope when you can take a look inside and see?

- Waterproof
- Reduces cross-contamination
- Easy to clean

CONTACT US

minxray.com

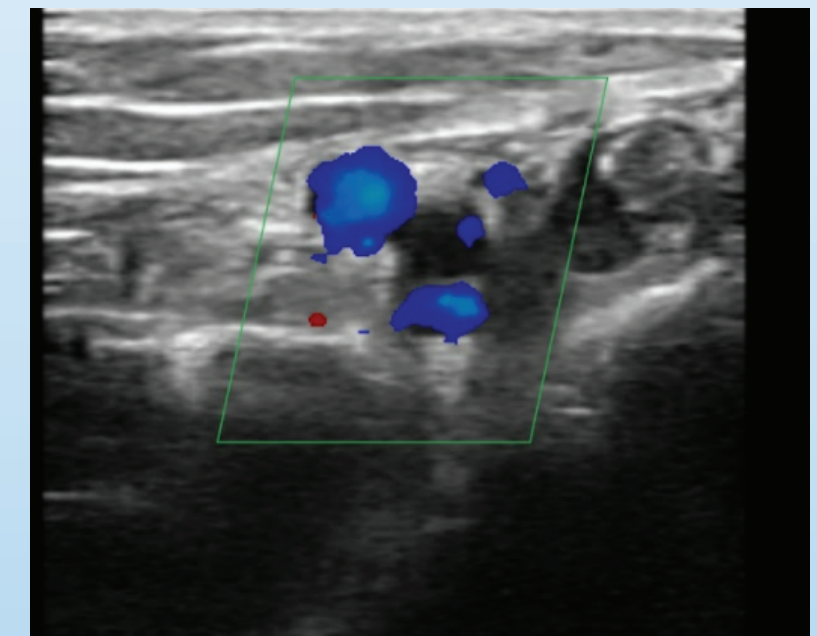
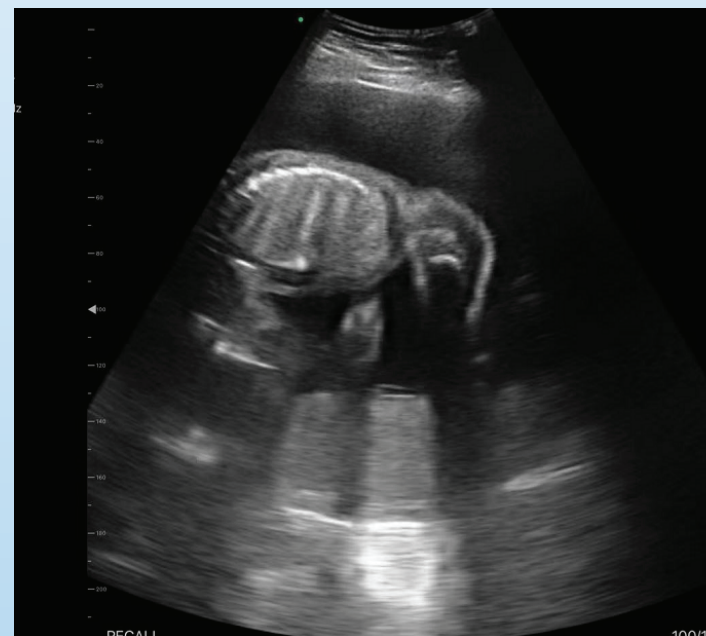
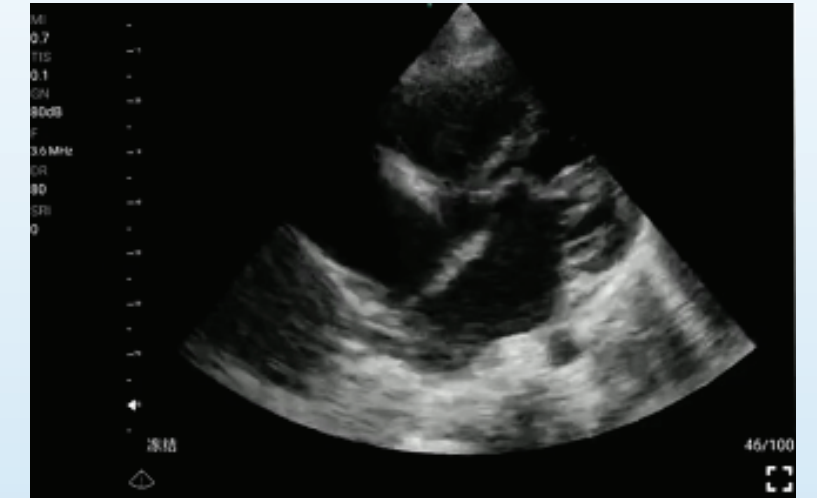
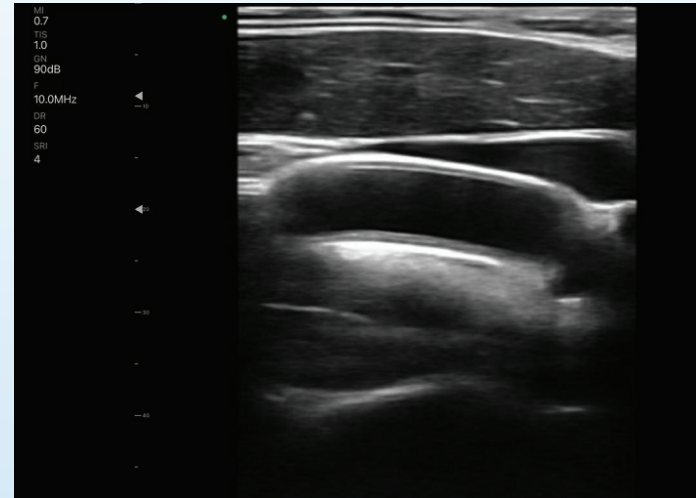
800-221-2245 (USA & Canada)

847-564-0323

info@minxray.com

Easy to Use on iOS and Android

Whether you're a first-timer or an ultrasound expert, turn on the power button and launch the app. Choose an exam type from the list of AI-powered presets, and start scanning. Just like using a camera, make easy adjustments to add more clearly if needed. Live training is available.



Wireless Handheld Ultrasound

SX-5C

Double-headed Color Probe



Applications:

- Small parts
- MSK
- Nerve
- Vascular access
- Abdomen
- Lung

Application Settings:

- Emergency Inspection: ER, ambulance, ICU, wild first aid, battlefield rescue
- Preliminary Examination: ward inspection, primary clinic examination, medical examination, health screening, home care, family planning, etc.
- Visualization Tools: vascular access, surgical and therapy guidance
- Remote Diagnosis, Consultation, Training: Works on smartphone or tablet, easy to use

CONTACT US

minxray.com

800-221-2245 (USA & Canada)

847-564-0323

info@minxray.com

Technical Specifications

Description: Double-headed Color Probe (Micro-convex/Linear)

Scanning Model: Electronic Array R20/L40

Display Model: B, B/M, Color, PW, PDI

Elements: 128, Channels: 32

Dimensions: 156mm x 60mm x 20mm

Weight: 260g

Frequency: 5.0/7.0MHz Convex/Phased Array, 7.5/10MHz Linear

Depth/Width/Angle: Convex 40-160mm, 50 Degree. Linear 20-100mm

Measure: Length, Area/Circumference, Trace, Angle, Obstetrics, Blood Flow Velocity, Heart Rate, S/D Ratio (Resistive Index), Gestational Age

Image Frame Rate: 20f/s

Battery: 3.5 continuous hours; Charge: 2 hours

Wifi: 802.11n/2.4G/5G/450Mbps

Operating System: iOS/Android/Windows

Charging Model: Wireless charging in 2 hours

Models: iPhone, Samsung (S7 or I7 and above), iPad (Generation 7 or newer)

18-month Warranty



Wireless Handheld Ultrasound

SX-1CTS

Triple-headed Color Probe



Applications:

- Small parts
- MSK
- Nerve
- Vascular access
- Abdomen
- Lung
- Cardiac

Application Settings:

- Emergency Inspection: ER, ambulance, ICU, wild first aid, battlefield rescue
- Preliminary Examination: ward inspection, primary clinic examination, medical examination, health screening, home care, family planning, etc.
- Visualization Tools: vascular access, surgical and therapy guidance
- Remote Diagnosis, Consultation, Training: Works on smartphone or tablet, easy to use

CONTACT US

minxray.com

800-221-2245 (USA & Canada)

847-564-0323

info@minxray.com

Technical Specifications

Description: Triple-headed Color Probe (Convex/Linear Convex with Mode of Phased Array Scan)

Scanning Model: Electronic Array R60/L40

Display Model: B, B/M, Color, PW, PDI

Elements: 128, **Channels:** 32

Dimensions: 156mm x 60mm x 20mm

Weight: 260g

Frequency: 3.5/5.0MHz Convex/Phased Array, 7.5/10MHz Linear
Depth/Width/Angle: Convex 90/160/220/305mm, 50 Degree. Linear 20/40/60/100mm, Phased Array: 80 Degree. Linear 40 Degree

Measure: Length, Area/Circumference, Trace, Angle, Obstetrics, Blood Flow Velocity, Heart Rate, S/D Ratio (Resistive Index), Gestational Age

Image Frame Rate: 20f/s

Battery: 3.5 continuous hours; **Charge:** 2 hours

Wifi: 802.11n/2.4G/5G/450Mbps

Operating System: iOS/Android/Windows

Charging Model: Wireless charging in 2 hours

Models: iPhone, Samsung (S7 or I7 and above), iPad (Generation 7 or newer)
18-month Warranty



Wireless Handheld Ultrasound

SX-7C

Double-headed Color Probe



Applications:

- Small parts
- MSK
- Nerve
- Vascular access
- Abdomen
- Lung

Application Settings:

- Emergency Inspection: ER, ambulance, ICU, wild first aid, battlefield rescue
- Preliminary Examination: ward inspection, primary clinic examination, medical examination, health screening, home care, family planning, etc.
- Visualization Tools: vascular access, surgical and therapy guidance
- Remote Diagnosis, Consultation, Training: Works on smartphone or tablet, easy to use

CONTACT US

minxray.com

800-221-2245 (USA & Canada)

847-564-0323

info@minxray.com

Technical Specifications

Description: Double-headed Color Probe (Round Curvilinear/Linear)

Scanning Model: Electronic Array R10/L40

Display Model: B, B/M, Color, PW, PDI

Elements: 128, **Channels:** 32

Dimensions: 156mm x 60mm x 20mm

Weight: 260g

Frequency: 6.0/8.0MHz Minicurvilinear, 7.5/10MHz Linear

Depth/Width/Angle: Minicurvilinear 30-120mm, 50 Degree. Linear 20-80mm

Measure: Length, Area/Circumference, Trace, Angle, Obstetrics, Blood Flow Velocity, Heart Rate, S/D Ratio (Resistive Index), Gestational Age

Image Frame Rate: 20f/s

Battery: 3.5 continuous hours; **Charge:** 2 hours

Wifi: 802.11n/2.4G/5G/450Mbps

Operating System: iOS/Android/Windows

Charging Model: Wireless charging in 2 hours

Models: iPhone, Samsung (S7 or I7 and above), iPad (Generation 7 or newer)

18-month Warranty



Wireless Handheld Ultrasound

EU-1C

Ophthalmic Scanner



Applications:

- Small parts
- Vascular access
- Ophthalmic

CONTACT US

minxray.com

800-221-2245 (USA & Canada)

847-564-0323

info@minxray.com

Technical Specifications

Description: Ophthalmic Scanner

Display Model: B, B/M, Color, PW, PDI

Elements: 128, **Channels:** 64

Weight: 150g

Frequency: 8.0/11.0MHz

Depth: 20-80mm

Image Optimization: Gain, Depth, Focal Zone(s), Dynamic Range, Frequency, Speckle Filter, Time Gain Compensation

Measure: Length, Area/Circumference, Trace, Angle, Obstetrics, Blood Flow Velocity, Heart Rate, S/D Ratio (Resistive Index), Gestational Age

Puncture: On-screen in-plane and out-of-plane guides

Image Frame Rate: 20f/s

Cine-loop: 100-1000 Frames

Battery: 1.5 continuous scan; Wireless Charging: 1 hour

Wifi: 802.11n/2.4G/5G/450Mbps

Operating System: iOS/Android

Models: iPhone, Samsung (S7 or I7 and above), iPad (Generation 7 or newer)
18-month Warranty



Wireless Handheld Ultrasound

UX-8P

Double-headed Color Probe



Applications:

- Small parts
- Vascular access
- Ophthalmic

Application Settings:

- Emergency Inspection: ER, ambulance, ICU, wild first aid, battlefield rescue
- Preliminary Examination: ward inspection, primary clinic examination, medical examination, health screening, home care, family planning, etc.
- Visualization Tools: vascular access, surgical and therapy guidance
- Remote Diagnosis, Consultation, Training: Works on smartphone or tablet, easy to use

CONTACT US

minxray.com

800-221-2245 (USA & Canada)

847-564-0323

info@minxray.com

Technical Specifications

Description: Double-headed Color Probe (Linear and Phased Array Scan)

Display Model: B, B/M, Color, PW, PDI

Elements: 128, Channels: 64

Footprint: Phased Array: 25*17mm, Linear 30mm

Weight: 150g

Frequency: 7.5/10.0MHz, Phased Array: 2.2-3.6MHz

Depth: Linear 20-100mm, Phased Array: 90-240mm

Image Optimization: Gain, Depth, Focal Zone(s), Dynamic Range, Frequency, Speckle Filter, Time Gain Compensation

Measure: Length, Area/Circumference, Trace, Angle, Obstetrics, Blood Flow Velocity, Heart Rate, S/D Ratio (Resistive Index), Gestational Age

Puncture: On-screen in-plane and out-of-plane guides

Image Frame Rate: 20f/s

Cine-loop: 100-1000 Frames

Battery: 1.5 continuous scan; Wireless Charging: 1 hour

Wifi: 802.11n/2.4G/5G/450Mbps

Operating System: iOS/Android

Models: iPhone, Samsung (S7 or I7 and above), iPad (Generation 7 or newer)
18-month Warranty



Wireless Handheld Ultrasound

EL5CE

Biplane Endocavity Probe



Applications:

- Urology
- OB/Gyn

Application Settings:

- Emergency Inspection: ER, ambulance, ICU, wild first aid, battlefield rescue
- Preliminary Examination: ward inspection, primary clinic examination, medical examination, health screening, home care, family planning, etc.
- Visualization Tools: vascular access, surgical and therapy guidance
- Remote Diagnosis, Consultation, Training: Works on smartphone or tablet, easy to use

CONTACT US

minxray.com

800-221-2245 (USA & Canada)

847-564-0323

info@minxray.com

Technical Specifications

Description: Double-headed Endocavity (Transvaginal)/ Curvilinear Color Probe

Scanning Model: Electronic Array R10/L40

Display Model: B, B/M, Color, PW, PDI

Elements: 128, **Channels:** 32

Weight: 260g

Frequency: 3.5/5.0MHz Curvilinear and 6.0/8.0MHz Linear
Depth/Width/Angle: Linear 20/40/60/100mm, Convex: 90-300mm

Measure: Length, Area/Circumference, Trace, Angle, Obstetrics, Blood Flow Velocity, Heart Rate, S/D Ratio (Resistive Index), Gestational Age

Image Frame Rate: 20f/s

Battery: 3.5 continuous hours; **Charge:** 2 hours

Wifi: 802.11n/2.4G/5G/450Mbps

Operating System: iOS/Android/Windows

Charging Model: Wireless charging in 2 hours

Models: iPhone, Samsung (S7 or I7 and above), iPad (Generation 7 or newer)
18-month Warranty



Wireless Handheld Ultrasound

US-2T

Biplane Endocavity Probe



Applications:

- Urology
- OB/Gyn

Application Settings:

- Emergency Inspection: ER, ambulance, ICU, wild first aid, battlefield rescue
- Preliminary Examination: ward inspection, primary clinic examination, medical examination, health screening, home care, family planning, etc.
- Visualization Tools: vascular access, surgical and therapy guidance
- Remote Diagnosis, Consultation, Training: Works on smartphone or tablet, easy to use

CONTACT US

minxray.com

800-221-2245 (USA & Canada)

847-564-0323

info@minxray.com

Technical Specifications

Description: Endocavity/Transvaginal Color Probe

Scanning Model: Electronic Array R10

Display Model: B, B/M, Color, PW, PDI

Elements: 128, **Channels:** 32

Weight: 150g

Frequency: 6.0/8.0MHz Linear

Depth/Width/Angle: Linear 30/60/90/120mm

Measure: Length, Area/Circumference, Trace, Angle, Obstetrics, Blood Flow Velocity, Heart Rate, S/D Ratio (Resistive Index), Gestational Age

Image Frame Rate: 20f/s

Battery: 4 continuous hours; **Charge:** 2 hours

Wifi: 802.11n/2.4G/5G/450Mbps

Operating System: iOS/Android/Windows

Charging Model: Wireless charging in 2 hours

Models: iPhone, Samsung (S7 or I7 and above), iPad (Generation 7 or newer)
18-month Warranty



Wireless Handheld Ultrasound

EQ-3

Large Size Animal Convex Probe



Applications:

- Pregnancy Scanning for Large Size Animals



Technical Specifications

Description: Large Size Animal Convex Probe

Scanning Mode: Electronic Array R60/60°

Display Model: B, B/M, Color Doppler, Power Doppler, Pulse Wave Doppler

Elements: 80, **Channels:** 32

Frequency: 3.5/5.0MHz

Scan Depth: 90-300mm; Linear Head: 40mm Footprint

Image Optimization: Gain, Depth, Focal Zone(s), Dynamic Range, Frequency, Speckle Filter, Time Gain Compensation

Cine-loop: Frames can set as 100/200/500/1000, Playback at 10 f/s

On-screen Needle Targeting: In-plane, Out-of-plane

On-screen Measurements: Length, Area/Circumference, Trace, Angle, Depth, Flow Velocity, Heart Rate, Resistive Index, OB Measurements (EGA and EFW)

Image Storage: JPEG, AVI and DICOM formats

Image Frame Rate: 20f/s

Battery Life: > 6 hours continuous scan; Recharge Time 0-Full: ~ 6 hours

Dimension: 156x60x20mm, **Weight:** 250g

Wifi: 802.11n/2.4G/5G/450Mbps

Operating System: iOS/Android

18-month Warranty

CONTACT US

minxray.com

800-221-2245 (USA & Canada)

847-564-0323

info@minxray.com

Wireless Handheld Ultrasound

SR-1C

Large Size Animal Linear Probe



Applications:

- Early Stage Pregnancy Exams for Large Animals



CONTACT US

minxray.com

800-221-2245 (USA & Canada)

847-564-0323

info@minxray.com

Technical Specifications

Description: Large Size Animal Linear Probe

Scanning Mode: Electronic Array R60/60°

Display Model: B, B/M, Color Doppler, Power Doppler, Pulse Wave Doppler

Elements: 128, **Channels:** 32

Length of Linear Probe: 6cm

Frequency: 6.5/8.0MHz

Scan Depth: 40-60-80-100mm; Linear Head: 40mm Footprint

Image Optimization: Gain, Depth, Focal Zone(s), Dynamic Range, Frequency, Speckle Filter, Time Gain Compensation

Cine-loop: Frames can set as 100/200/500/1000, Playback at 10 f/s

On-screen Needle Targeting: In-plane, Out-of-plane

On-screen Measurements: Length, Area/Circumference, Trace, Angle, Depth, Flow Velocity, Heart Rate, Resistive Index, OB Measurements (EGA and EFW)

Image Storage: JPEG, AVI and DICOM formats

Image Frame Rate: 20f/s

Battery Life: > 7 hours continuous scan; Recharge Time 0-Full: ~ 6 hours

Dimension: 156x60x20mm, **Weight:** 250g

Wifi: 802.11n/2.4G/5G/450Mbps

Operating System: iOS

18-month Warranty

Wireless Handheld Ultrasound

UX-2D

Biplane Endocavity Probe



Applications:

- Urology
- OB/Gyn

Application Settings:

- Emergency Inspection: ER, ambulance, ICU, wild first aid, battlefield rescue
- Preliminary Examination: ward inspection, primary clinic examination, medical examination, health screening, home care, family planning, etc.
- Visualization Tools: vascular access, surgical and therapy guidance
- Remote Diagnosis, Consultation, Training: Works on smartphone or tablet, easy to use

CONTACT US

minxray.com

800-221-2245 (USA & Canada)

847-564-0323

info@minxray.com

Technical Specifications

Description: Bi-plane Endocavity Color Probe

Scanning Mode: Electronic Array R60/L40

Display Model: B, B/M, Color, PW, PDI

Elements: 128, **Channels:** 32

Weight: 150g

Frequency: 6.5/8.0MHz Linear

Depth/Width/Angle: Linear 20-100mm, Convex: 50-300mm

Measure: Length, Area/Circumference, Trace, Angle, Obstetrics, Blood Flow Velocity, Heart Rate, S/D Ratio (Resistive Index), Gestational Age

Image Frame Rate: 20f/s

Battery: 3.5 continuous hours; **Charge:** 2 hours

Wifi: 802.11n/2.4G/5G/450Mbps

Operating System: iOS/Android/Windows

Charging Model: Wireless charging in 2 hours

Models: iPhone, Samsung (S7 or I7 and above), iPad (Generation 7 or newer)
18-month Warranty

